



AI-POWERED • CLOUD-BASED • ISO CERTIFIED

Lead the Future with AI-enabled Cloud-based ERP

END-TO-END SOLUTIONS | AFFORDABLE PRICING





A Trusted ERP Partner with Global Presence

Absolute ERP is an ISO-certified company delivering intelligent, scalable ERP solutions for the manufacturing industry. Our systems streamline operations, enhance productivity, and drive business growth. With a global presence and offices in USA, India, Turkey, Kuwait, UAE, Saudi Arabia, and Qatar, we provide world-class ERP and software solutions tailored to your business needs.

150+

Team
Members

1000+

Worldwide
Clients

15+

Years in
Business

7+

Offices
Globally

Recognized for Excellence

Honored with ET Leadership Excellence Award 2025 in Emerging Leader for Innovative and AI-Based ERP Platform.

2

ET NEWSMAKERS

Friday, 29 August, 2025
The Economic Times

Absolute ERP: Driving Growth with Innovation & Technology

The realm of business management software is where Absolute ERP, one of leading provider of enterprise resource planning (ERP) solutions performs. Initially started in 2014 with the optimism of expansion and satisfaction of customers' needs, the company today ranks as one of the renowned service providers in this sector. They have a workforce that is more than 150 people spread across continents and empowering the business. Over time they company has managed to acquire more than 1000 customers globally.



Nadeem Pasha, CEO, Absolute ERP Pvt. Ltd.

Absolute ERP – a ERP software provider in India offers customized top-class solutions driven by determination and innovation to cater to unique organizational requirements within different industries. From humble beginnings, Absolute ERP has grown its range of various services to different industries such as textile, footwear, steel, cosmetics, plastic, wood, and many more.

Absolute ERP is a highly reliable business management solution provider that uses up-to-date technologies including Artificial Intelligence, Machine Learning, IoT, etc. to guarantee efficiency. Their extensive portfolio features numerous options aimed at simplifying procedures, improving asset usage rates, and making any enterprise grow.

As an ISO-certified organization, Absolute ERP is renowned for its efficient and creative manner of delivering effective ERP solutions. With an eye on growth and new ideas, they are always keen on ensuring that companies continue to thrive even when markets change frequently.



The People Powering Absolute ERP



Nadeem Pasha
CEO



Dheeraj Kausshik
VP | Sales



Vibhav Gupta
VP | Marketing



Vivek Sisodia
CTO

Driving Efficiency, Delivering Growth

Mission

To empower business enterprises with intelligent, scalable, and industry-specific technology solutions that drive efficiency and enable data-driven decision-making, while maintaining the highest standards of quality, security, and customer satisfaction.

Vision

To be a global leader in technology solutions, recognized for innovation, reliability, and transformative impact, delivering affordable and scalable systems that help businesses worldwide achieve sustainable growth and operational excellence.



Why Absolute ERP is the Right Choice



Cloud-Based ERP

Tailored solutions to meet specific industry requirements



Affordable & Scalable

Solutions that grow with your business.



Global Presence

Offices in USA, India, Turkey, Kuwait, UAE, Saudi Arabia, and Qatar, ensuring local support.



Proven Track Record

Trusted by 150+ clients worldwide for operational transformation.

Business Challenges Without ERP

Disconnected processes = Higher costs & missed growth opportunities

Production Delays

Missed deadlines, lost clients

Inventory Management

Stockouts/overstock = higher costs

Manual Processes

30% slower operations, higher labor cost

No Real-Time Visibility

Delayed decisions, missed opportunities

Weak Financial Control

Cash flow leaks, compliance risks

Quality Issues

10–15% returns, unhappy customers





Turning Challenges into Opportunities

How Absolute ERP Makes the Difference

Smarter Scheduling

Automates production planning to ensure up to 30% faster production cycles

Real-Time Tracking

Live stock monitoring reduces stockouts by up to 50% and lowers holding costs by up to 20%

Automated Workflows

Cuts duplication and speeds up operations by up to 40%

Live Dashboards

Centralized insights enable up to 2x faster decision-making

Integrated Accounting

Improves accuracy, eliminates leaks, ensures compliance

Built-In Quality Control

Proactive checks reduce defects and returns by up to 15%

Sales



Warehouse Management



Purchase



Production Planning



Accounts



Production Management



Taxation



Vendor Delivery Challan



MRP (Material Requisition Planning)



HR & Payroll



Inventory Management



CRM



One ERP, Endless Possibilities

All Modules in One Platform

ERP Modules That Transform Your Operations

A Closer Look at Features Driving
Efficiency Across Departments

Streamline Your Sales Operations

From Quotations to Invoices, Track Every Step Efficiently



Quotation



Sales Order



Proforma Invoice



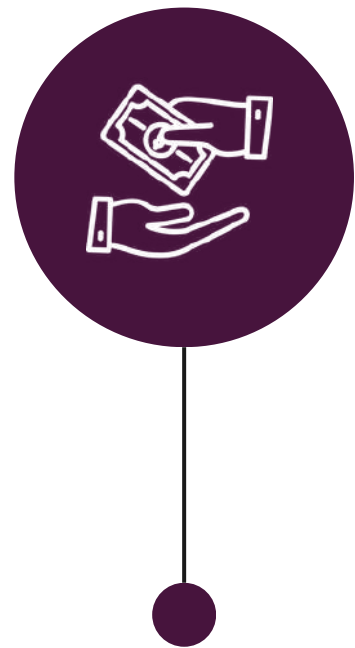
Multi-Level Approval / Authorization



Reporting

Efficient Procurement Made Easy

Manage Orders, Approvals, Quality, and Reports Seamlessly



Purchase



**Purchase
Order**



**GRN (Goods
Receipt
Note)**



**Quality
Check**



**Multi-Level
Approval /
Authorization**



**Purchase
Reporting**

End-to-End Financial Control

Manage Transactions, Reporting, and Compliance Seamlessly



**Accounting
Entries**

**Bank
Reconciliation**

**Expenses
Management**

**Invoice (E-
invoicing &
E-way bill
integration)**

**Bills,
Receiving,
Payments**

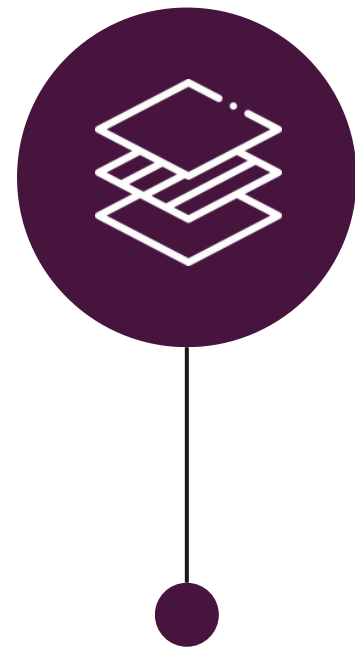
**Debit Note /
Credit Note**

**Financial
Statements
& Reports**

**Taxation /
Compliance**

Seamless Material Planning & Control

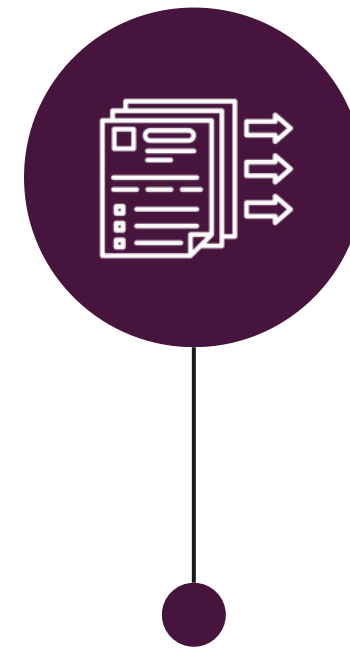
Plan, Track, and Approve Material Requirements Efficiently



**Material
Requisition**



**Issuance
of
Material**



**Indent
Requisition
(PO Pending /
PO Done)**



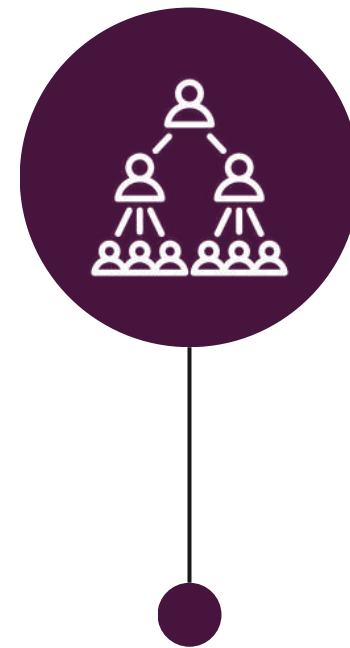
**Multi-Level
Approval /
Authorization**

From Stock to Store – Streamlined

Track, Manage, and Optimize Your Stock Across All Locations



**Inventory
Management
– FIFO**



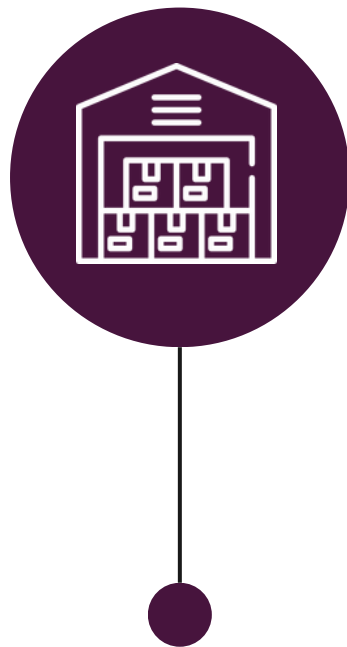
**Multi-Level
Approval /
Authorization**



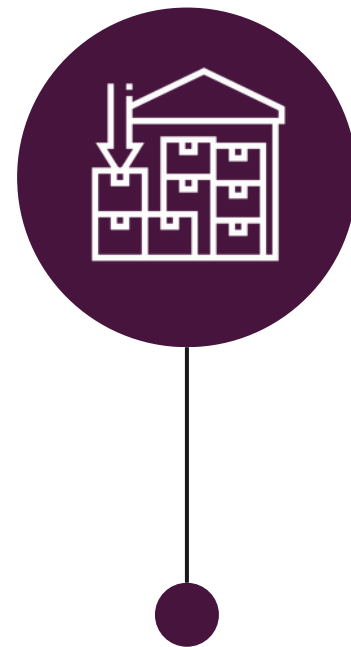
**Reports &
Tracking**

Manage Warehouses Efficiently

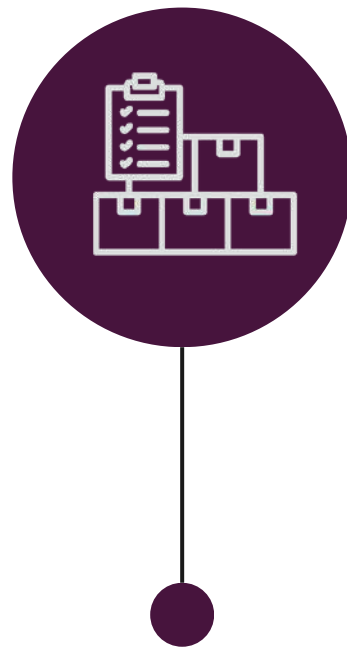
Track, Transfer, and Approve Stock Across Multiple Locations



**Warehouse
Creation &
Setup**



**Multi-
Warehouse
Management**



**Inter-
Location
Stock
Transfer**



**Receiving
of Stock**



**Multi-Level
Approval /
Authorization**



**Reports &
Analytics**

Intelligent Manufacturing Management

Schedule, Track, and Optimize Manufacturing Operations
Seamlessly



**Make to
Order /
Make to
Stock**



**Multi-Level
Approval /
Authorization**



**Date Planning: Work Schedule
Target Date,
Start Date,
Finish Date**



Planning



**Time
Management
Planning**



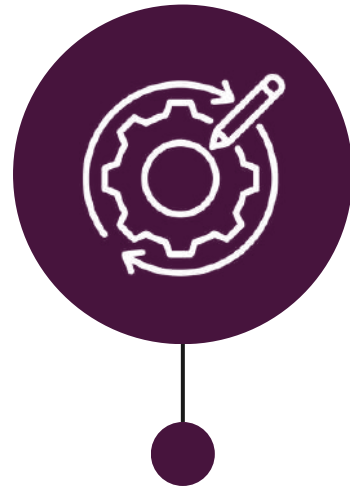
**Cost
Estimations**



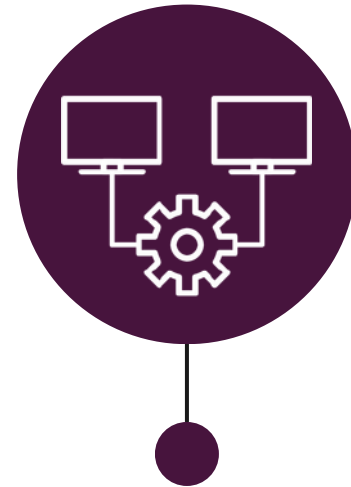
**Shift
Planning**

Manage Warehouses Efficiently

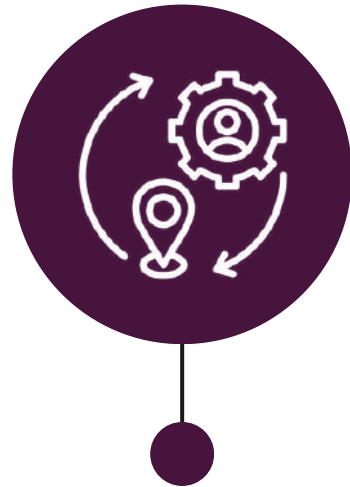
Track, Transfer, and Approve Stock Across Multiple Locations



**Process
Creation**



**Machine
Mapping**



**Employee
Mapping**



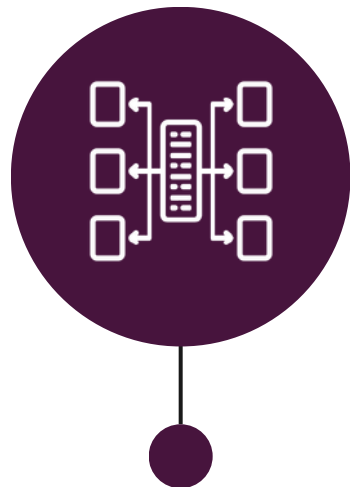
**Routing
Mapping**



**Scrap &
Damages
Handling**



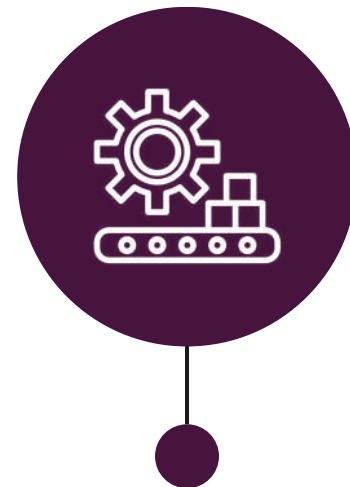
**Bill of Materials
Creation &
Mapping**



**Parameter
Mapping**



**Multi-Level
Authorization**



**Production &
Material Control**



**Quality
Check**



**Reports &
Analytics**

Vendor Delivery Challan Management

Track Deliveries, Returns, and Vendor Performance



**Delivery
Challan
Returnable**



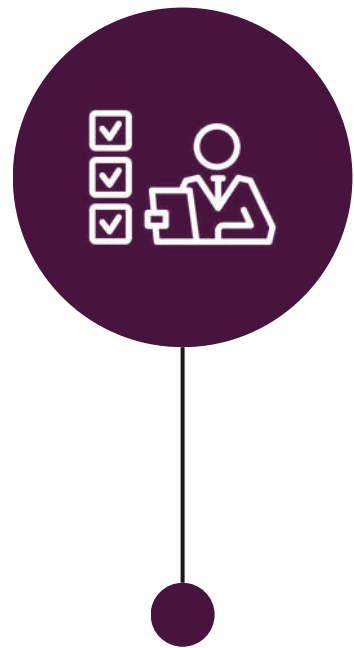
**Delivery
Challan
Non-
Returnable**



**Reports &
Analytics**

CRM for Sales Growth

Capture Leads, Track Sales, and Forecast Revenue



**Administrat
or Controls**



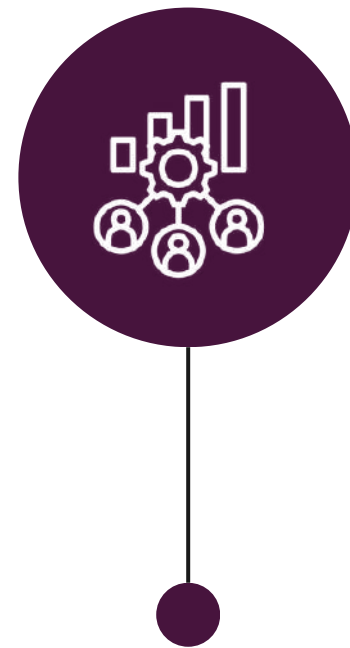
**Lead
Management
& Assignment**



**Lead
Follow-Up
&
Reminders**



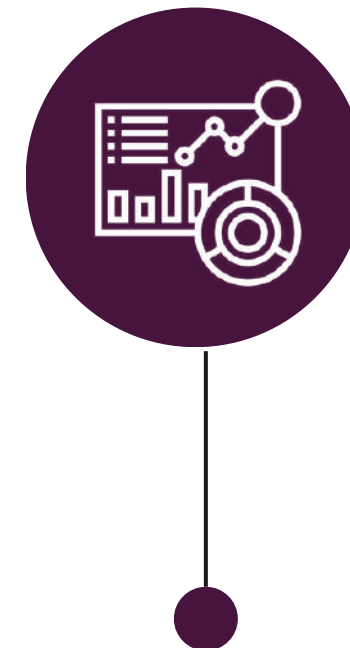
**Meeting
Management**



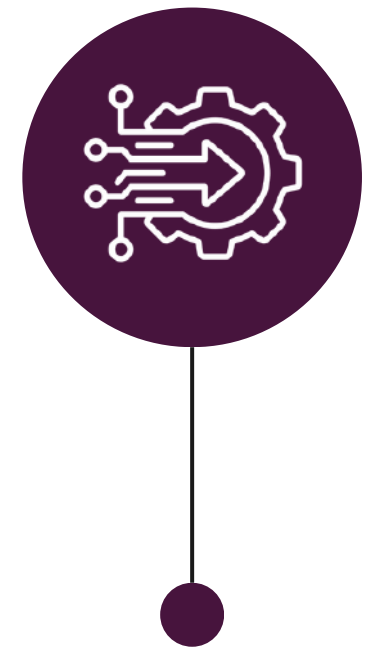
**Sales
Management**



**Sales
Forecasting**



**BDM / BDE
Dashboard**



**Integration
Capabilities**

Complete Employee Lifecycle

Automate HR Processes, Attendance, Payroll, and Compliance



**Employee
Management**



**Payroll &
Compensation**



**HR Processes
& Compliance**

Scalable Features for Growing Businesses

01

Multilingual & Multi-Country Support

02

Multi-Location & Multi-Warehouse Support

03

Fully Integrated Multi-Currency Support

04

Flexible Architecture

05

Multi-User Access

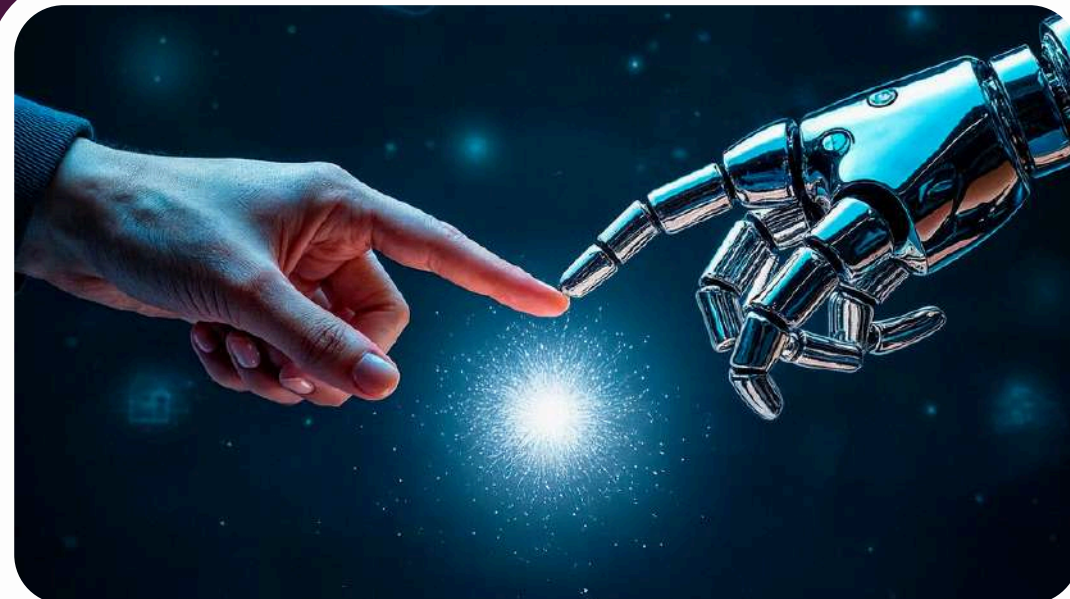


Powered by Next-Gen Technology



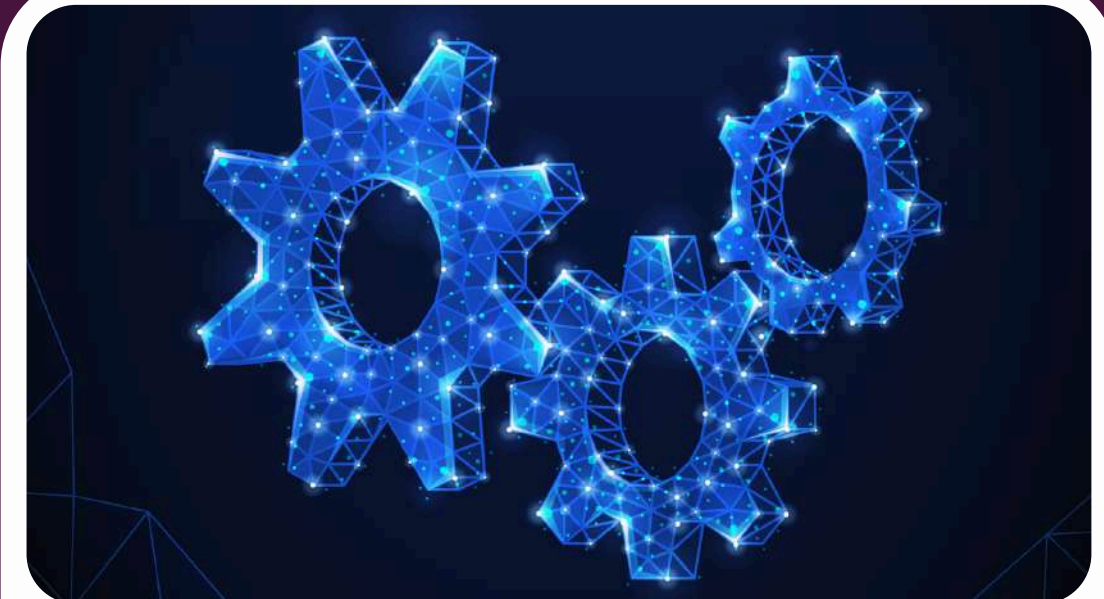
Cloud-Based ERP

Access anytime, anywhere with real-time data synchronization



Business Intelligence (BI) Reports

In-depth analytics for strategic insights



Integration Capabilities

Seamless integration with third-party applications

We're With You Every Step of the Way



Onboarding

Smooth onboarding process with comprehensive training

Customer Support

24/7 support through email, phone, and live chat

Updates

Regular software updates and enhancements

Dedicated Account Managers

Personalized support for enterprise clients

Key Clients



And Many More...

Transform Your Business with Absolute ERP

Thank you for your time! We look forward to helping your business grow.

CONTACT US



+91 9818825303



info@erpabsolute.com



www.erpabsolute.com